

# Organigramma Proposto

2022 - 2024

---

710 - ASST DEI SETTE LAGHI



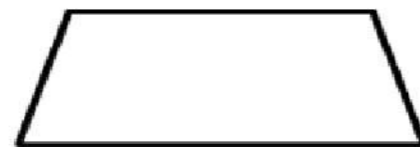
# Legenda



Dipartimento Gestionale



Dipartimento Funzionale



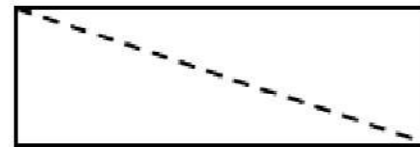
SC – Struttura Complessa



SSD – Struttura Semplice Dipartimentale



SS – Struttura Semplice



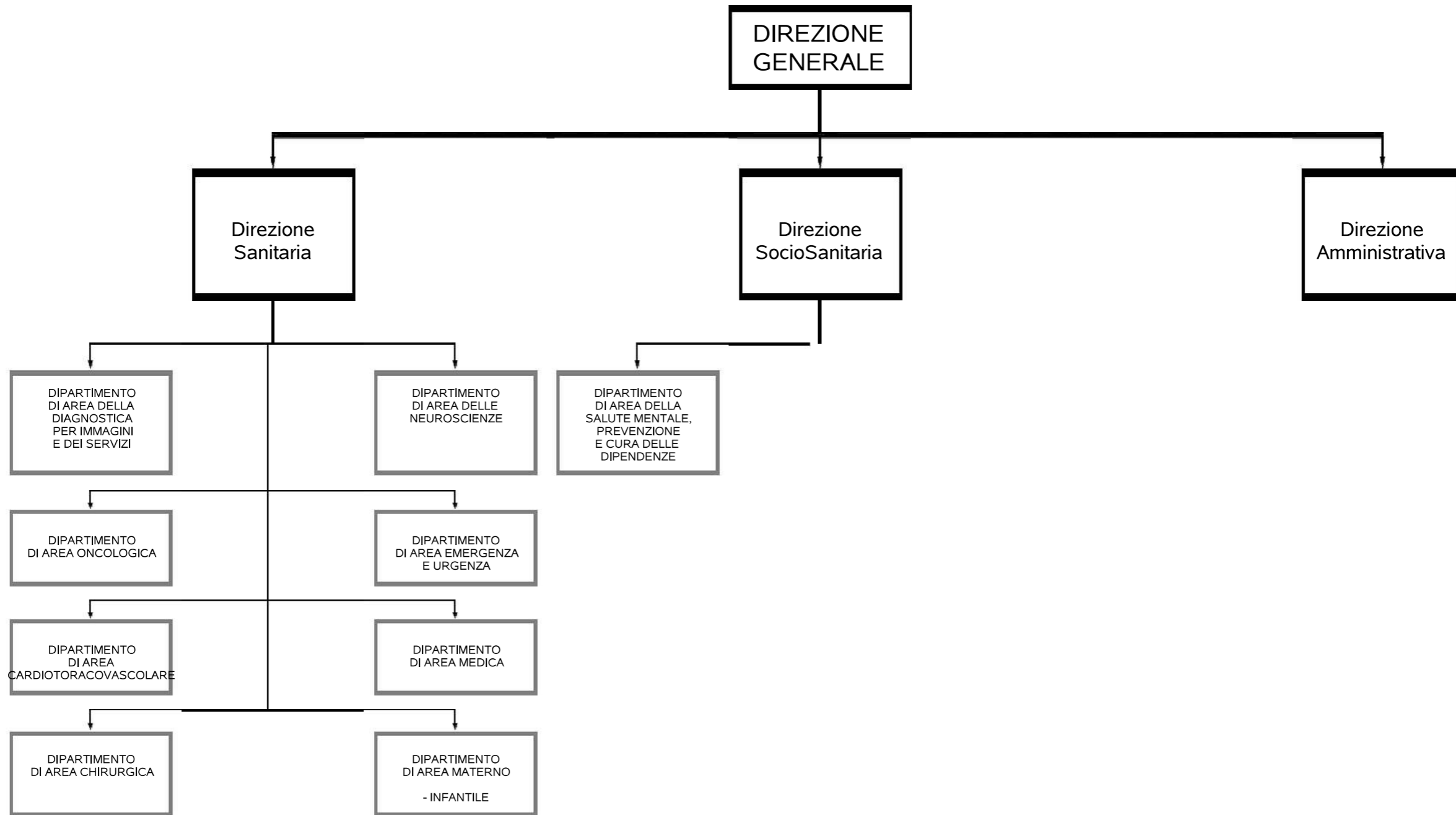
SD – Struttura Semplice Distrettuale

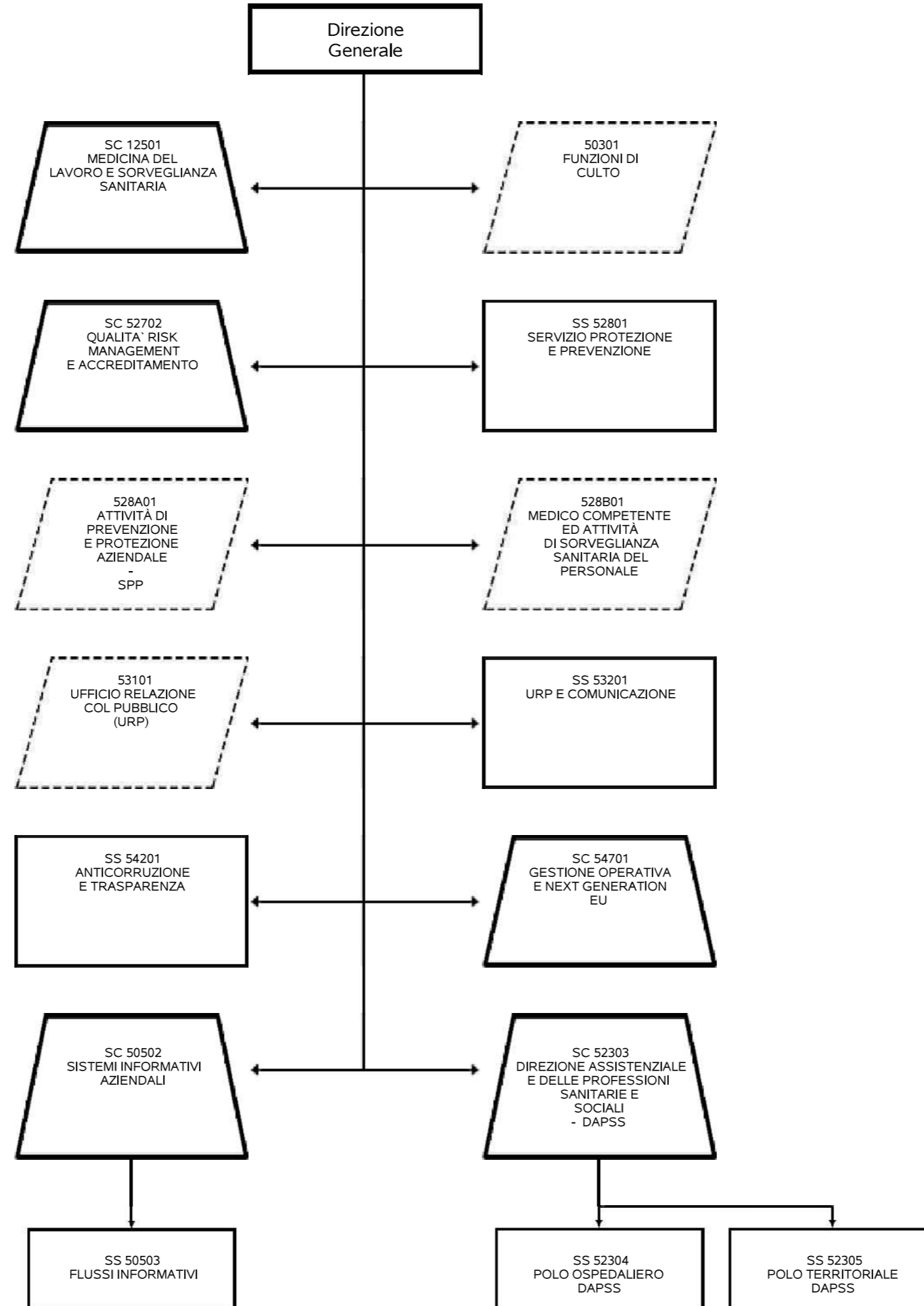


Funzione

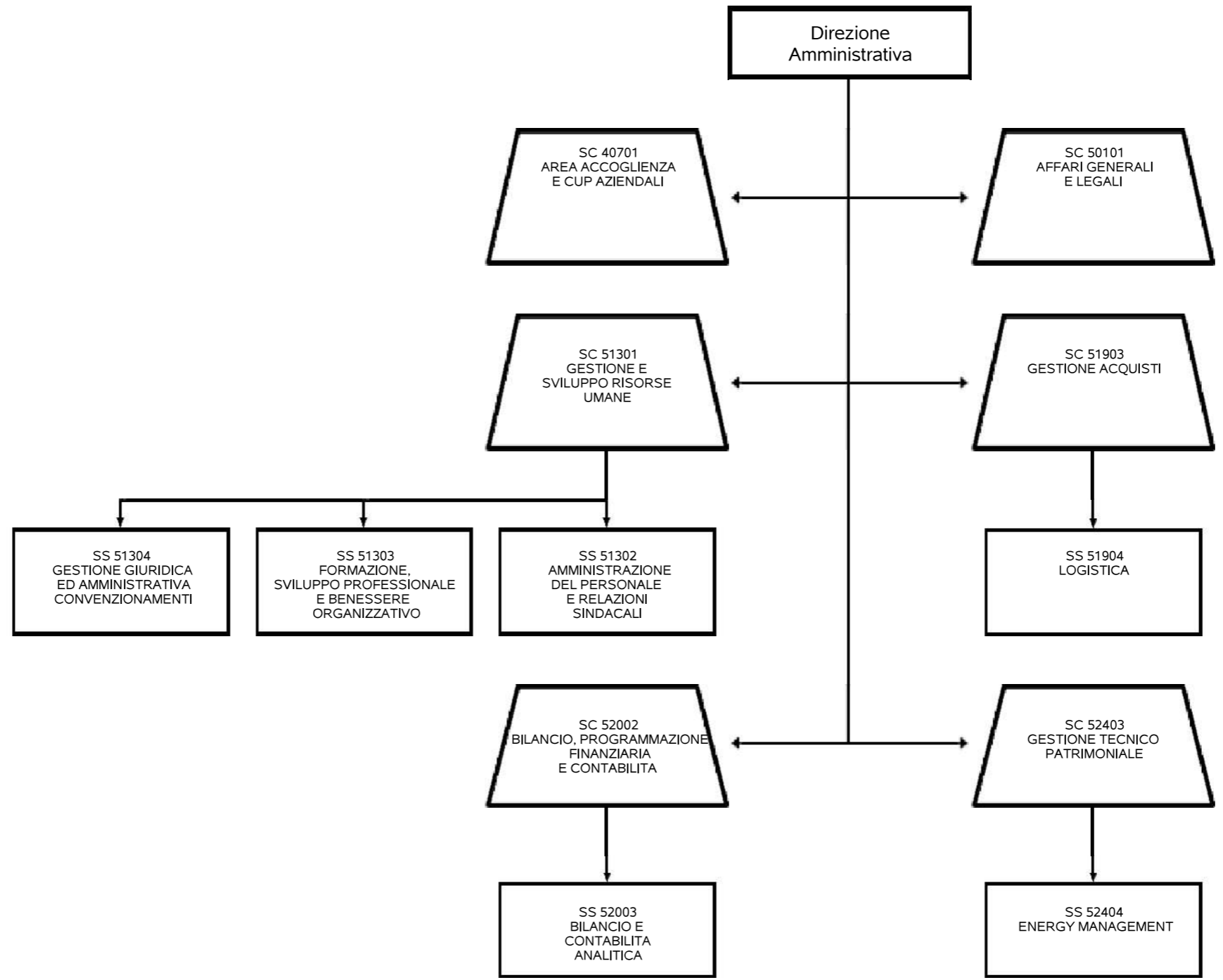


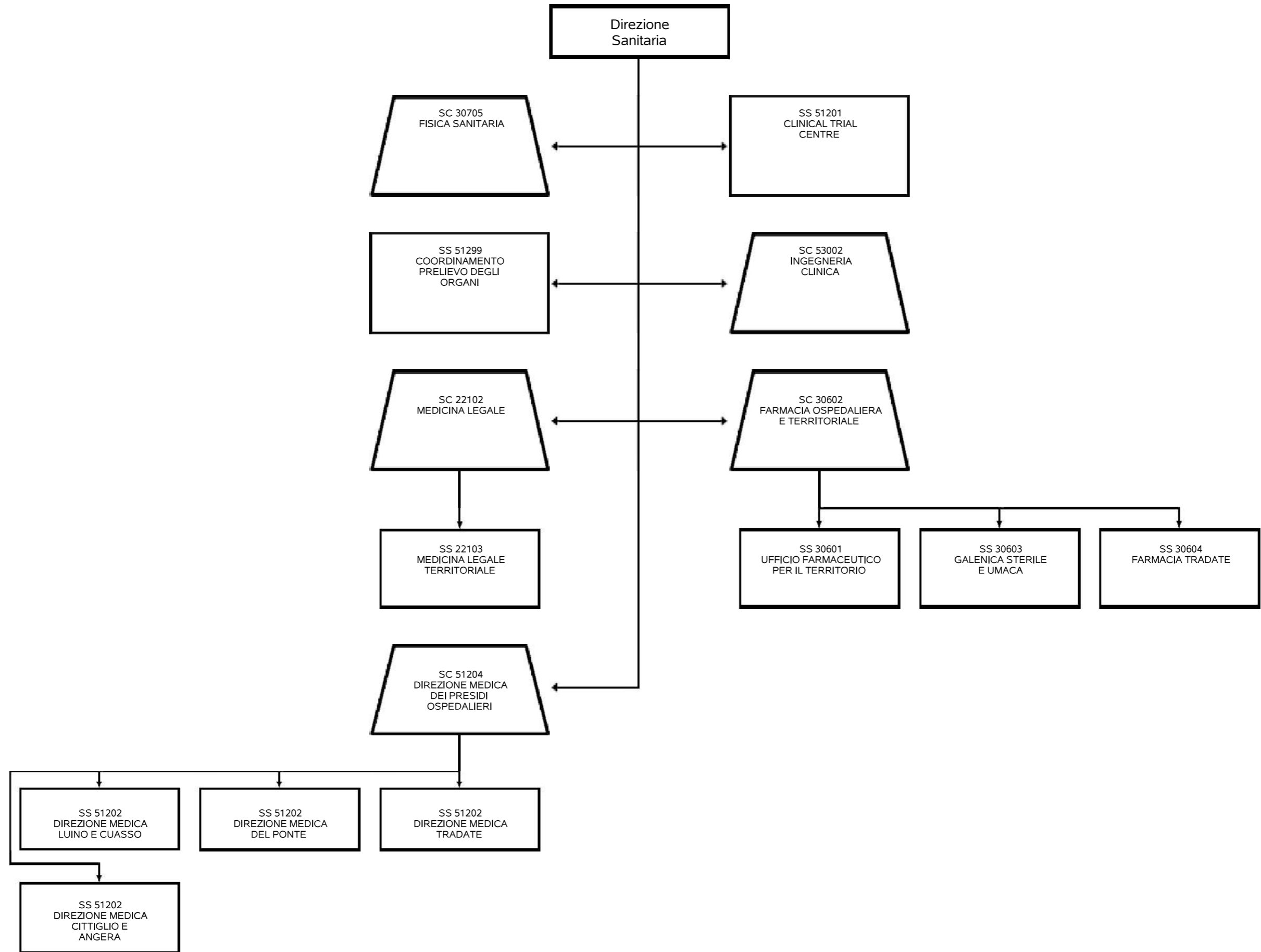
Relazione Funzionale

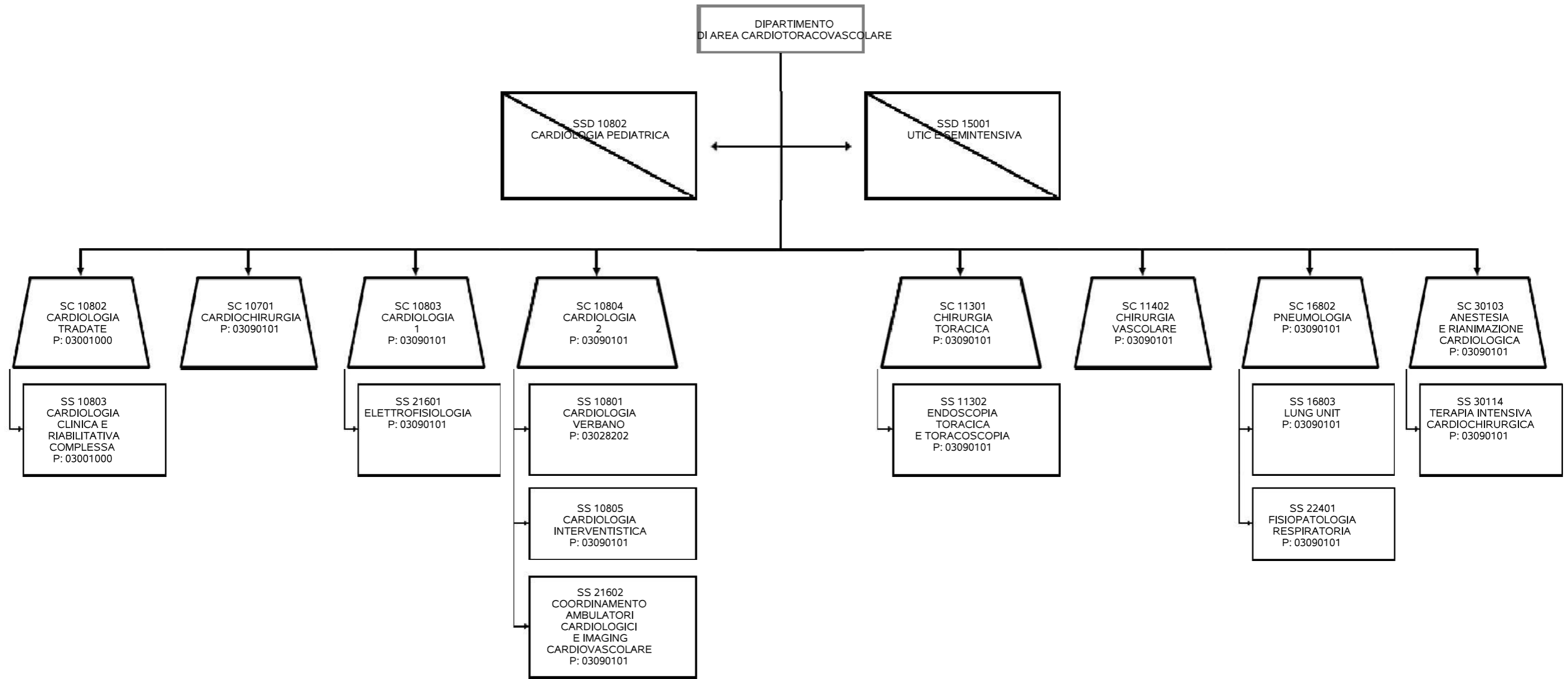






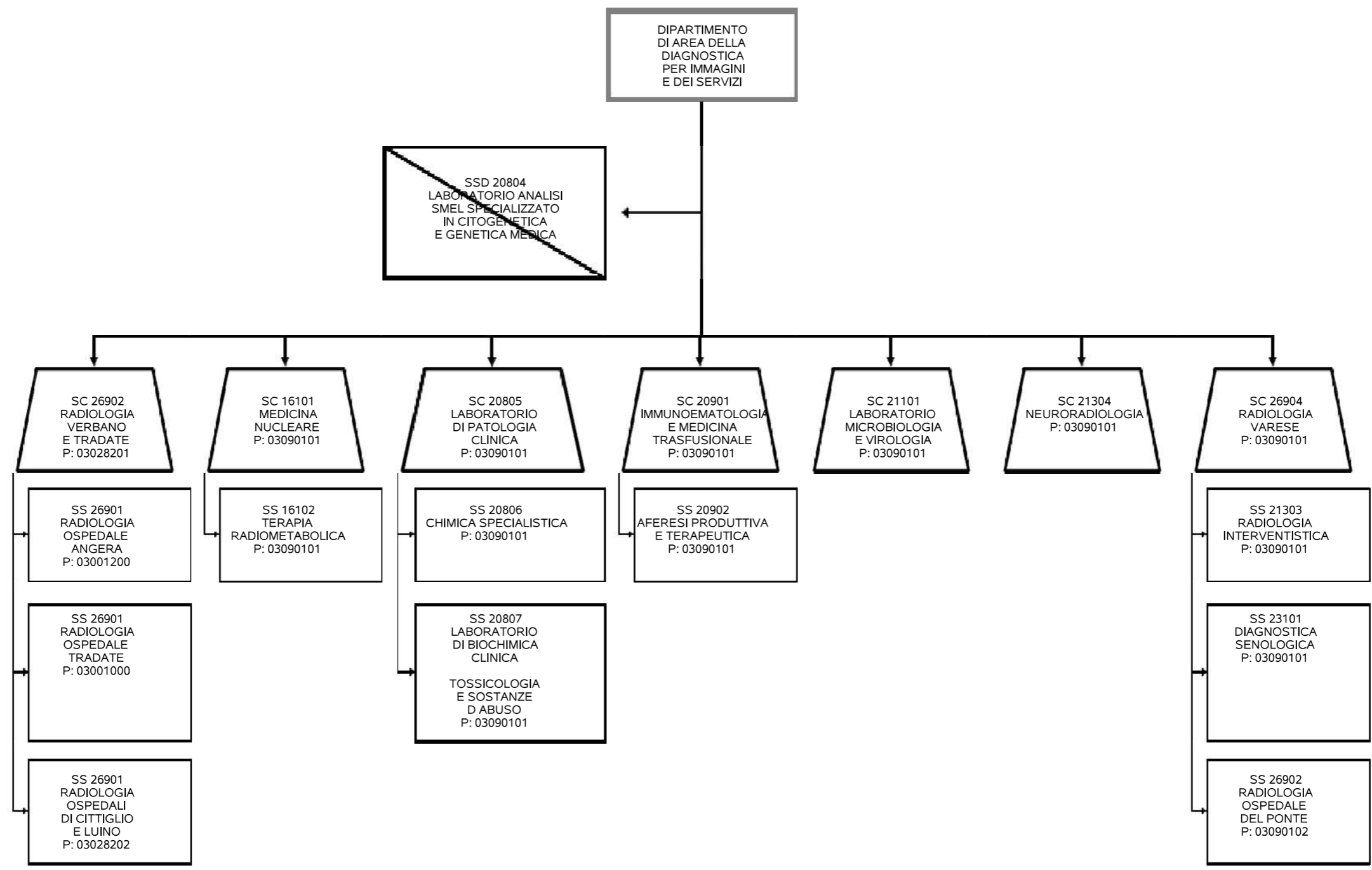


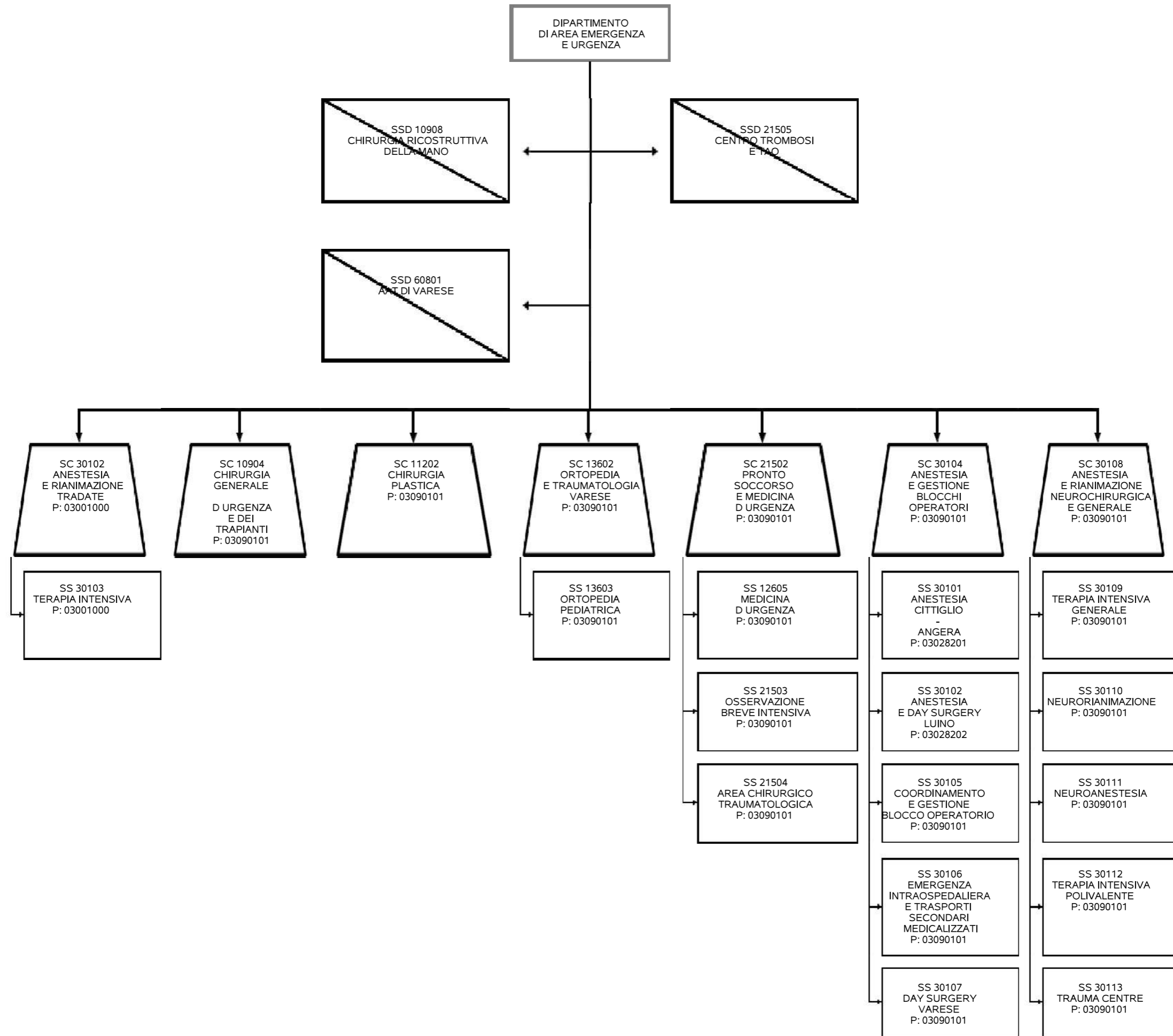


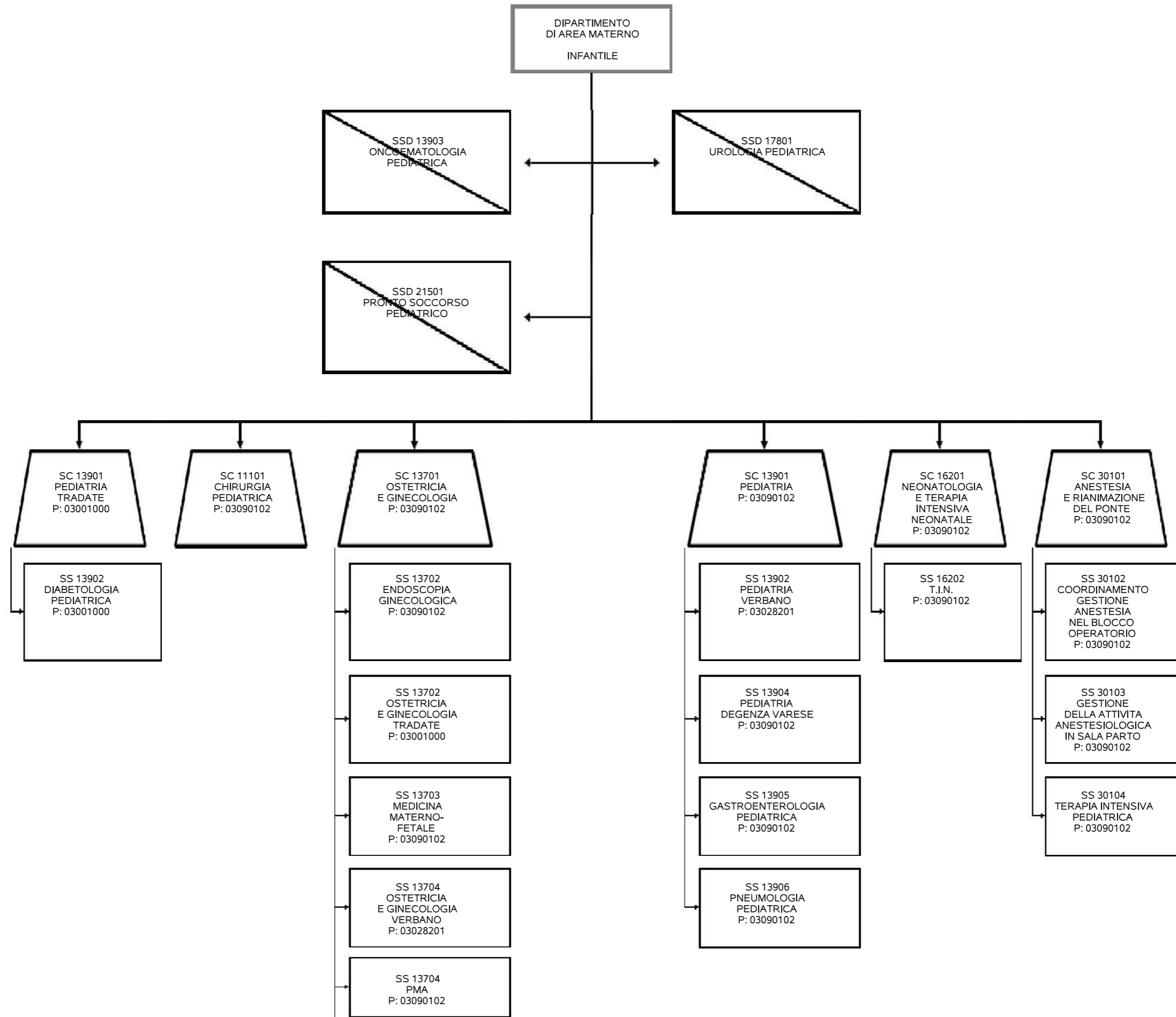




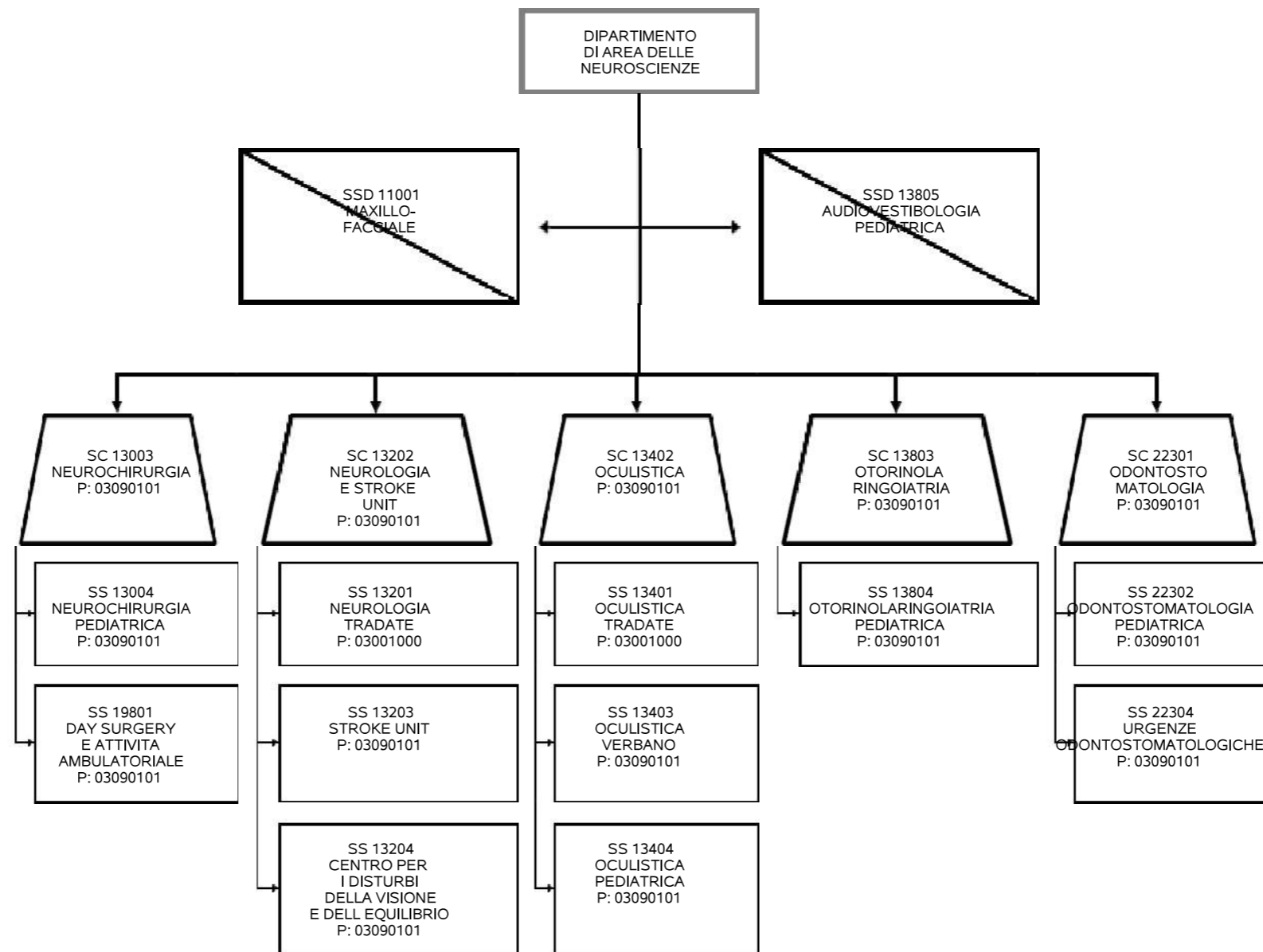
ORGANIGRAMMA PROPOSTO - ASST DEI SETTE LAGHI - Direzione Sanitaria - DIPARTIMENTO DI AREA DELLA DIAGNOSTICA PER IMMAGINI E DEI SERVIZI Staff del DIPARTIMENTO DI AREA DELLA DIAGNOSTICA PER IMMAGINI E DEI SERVIZI

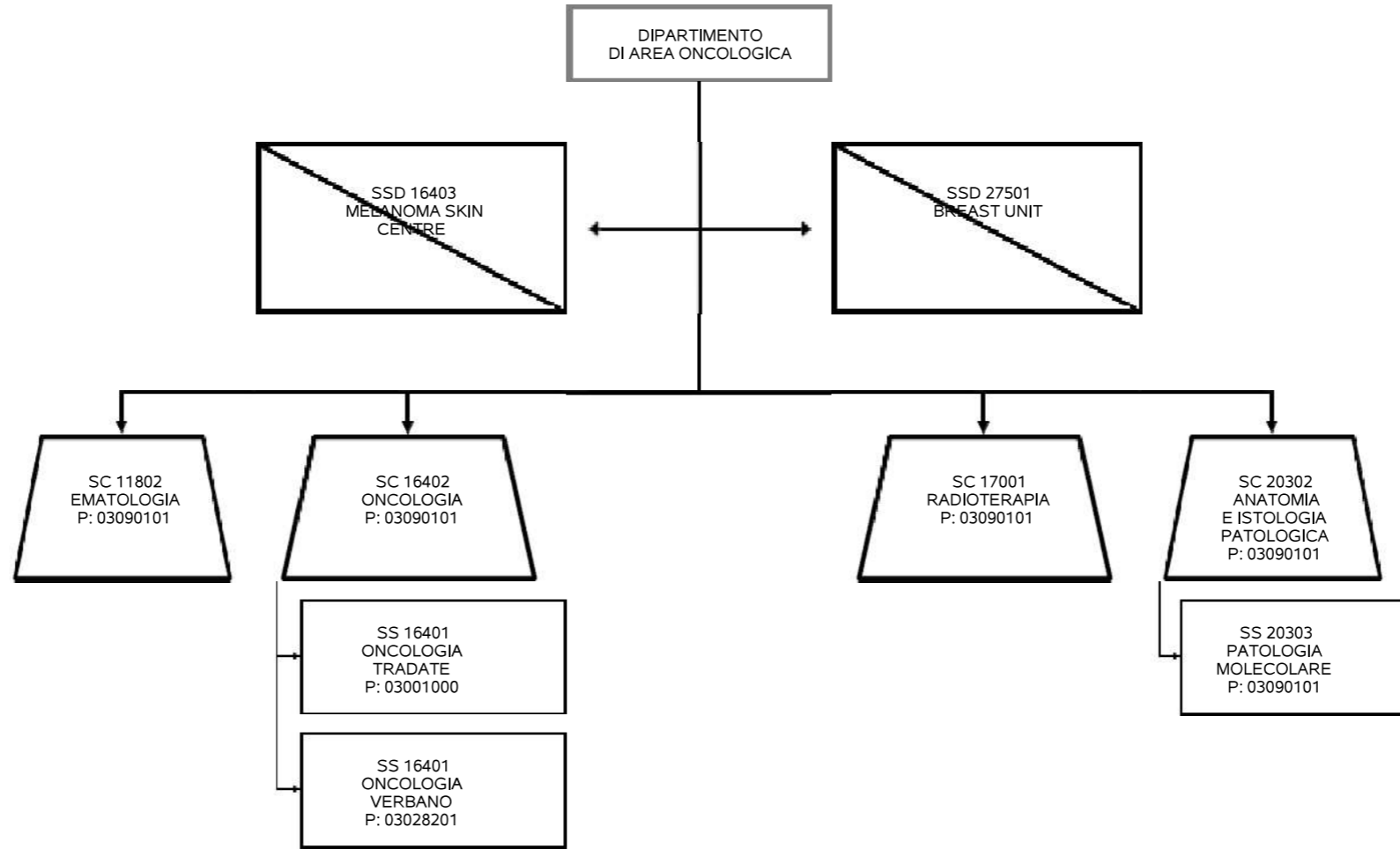


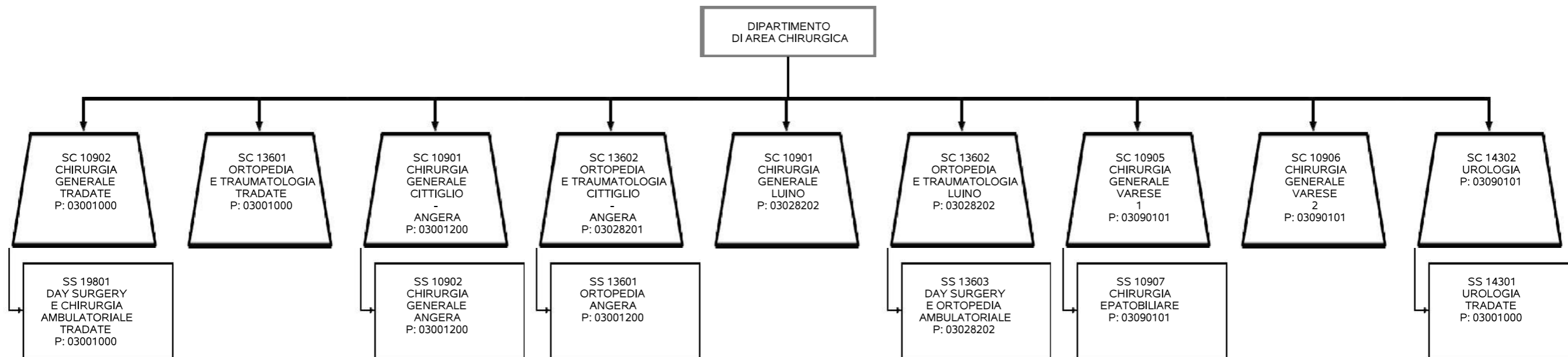


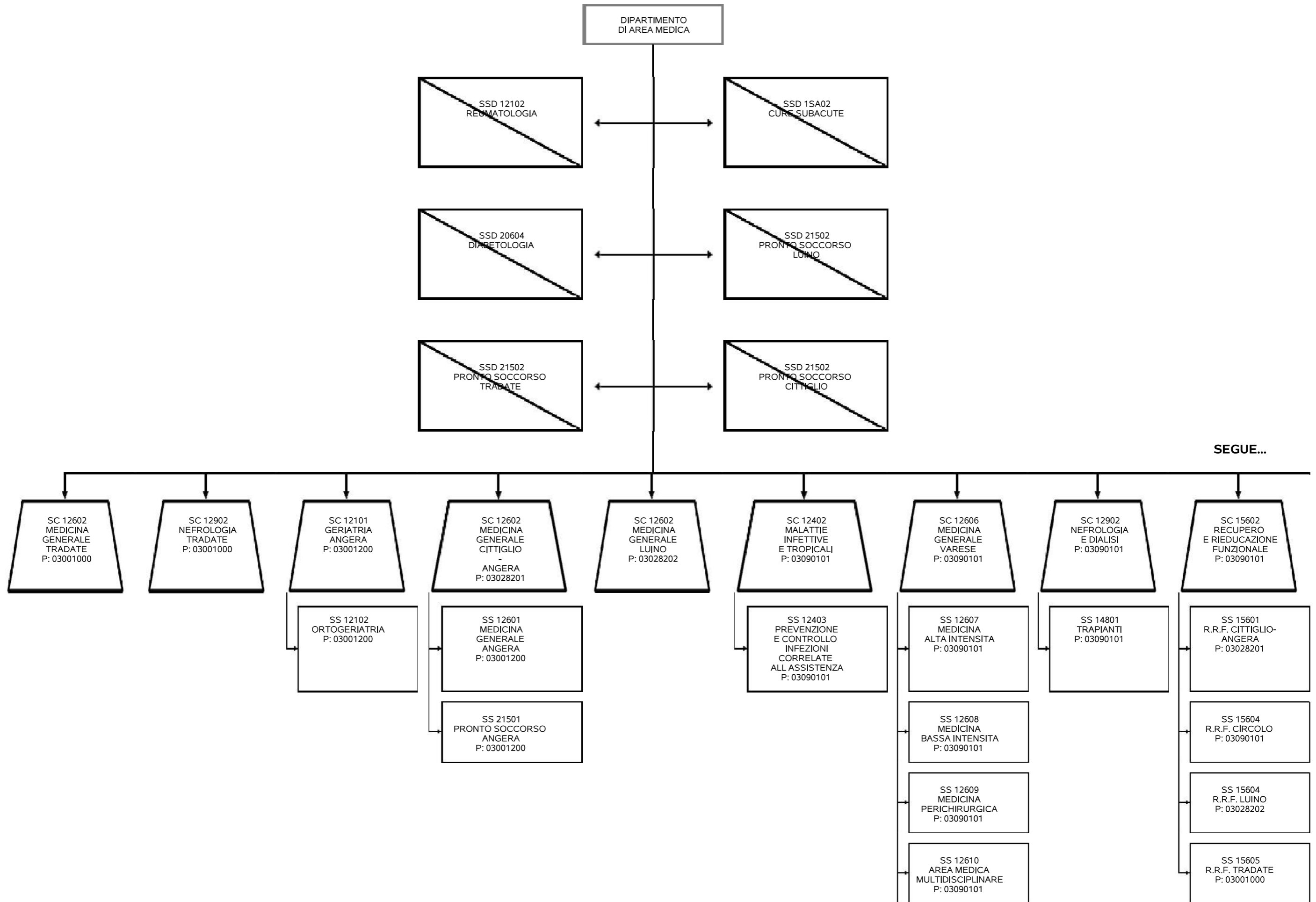




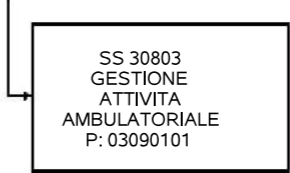


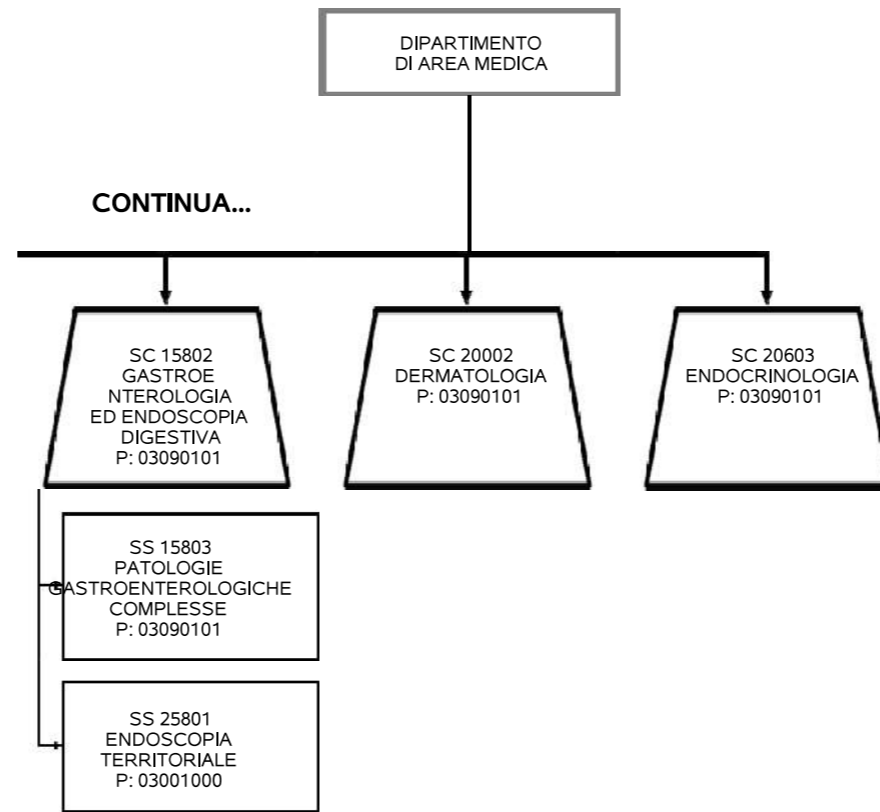


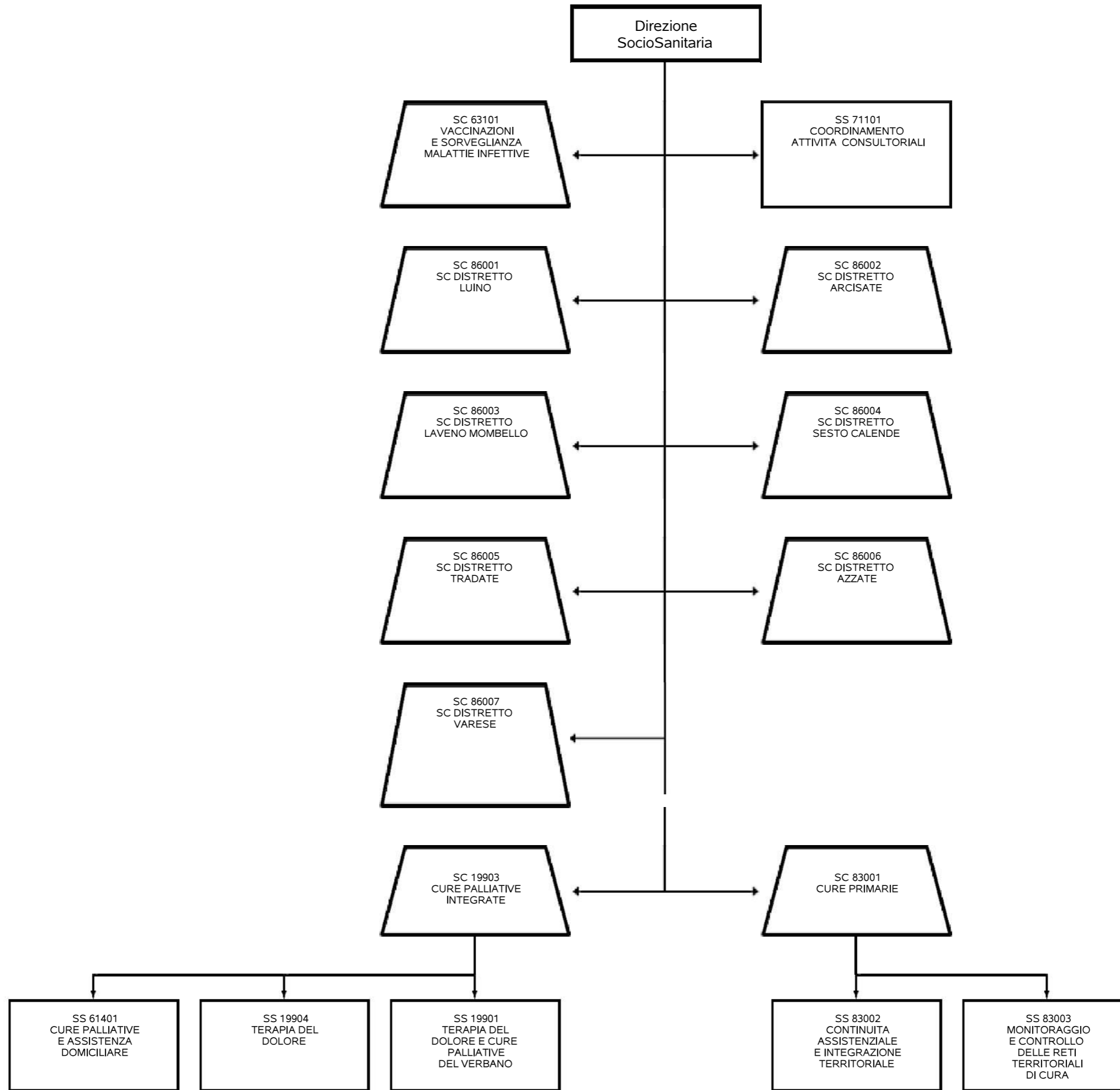














**ORGANIGRAMMA PROPOSTO - ASST DEI SETTE LAGHI - Direzione SocioSanitaria - DIPARTIMENTO DI AREA DELLA SALUTE MENTALE, PREVENZIONE E CURA DELLE DIPENDENZE Staff del DIPARTIMENTO DI AREA DELLA SALUTE MENTALE, PREVENZIONE E CURA DELLE DIPENDENZE**

